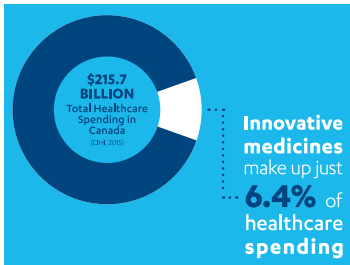
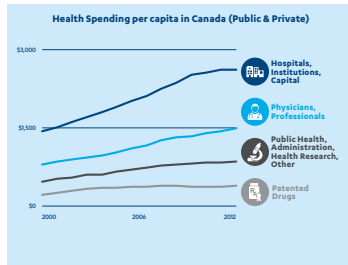


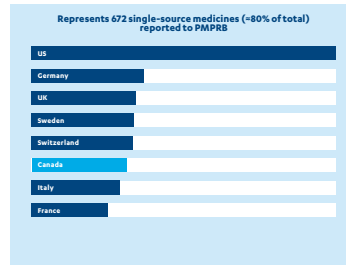
VALUE OF MEDICINES IN CANADA — REFERENCE GUIDE



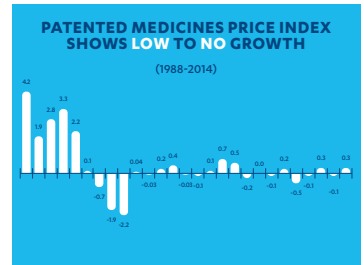
Reference:
Canadian Health Policy Institute, Spending on Patented Drugs in Canada 1990-2014, February 23, 2016.



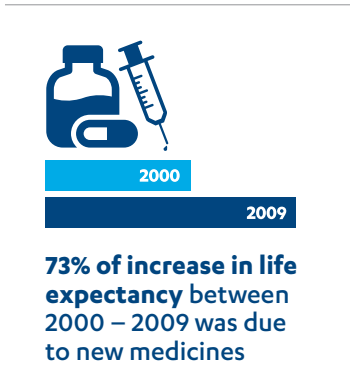
Reference:
Canadian Health Policy Institute, Spending on Patented Drugs in Canada, 1990-2014, February 23, 2016.



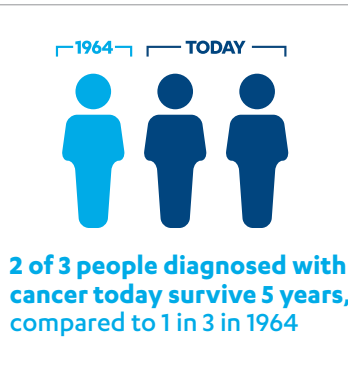
Reference:
Innovative Medicines Canada, International Ranking of Canadian Prices, 2010-2015.



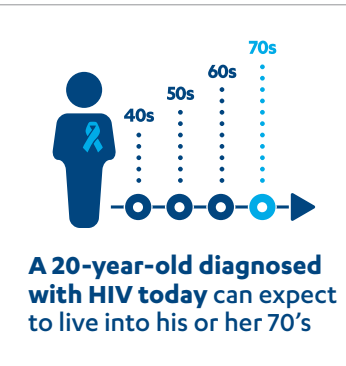
Reference:
Patented Medicine Prices Review Board (PMPRB) Annual Report 2014 (tabled in Parliament, December 2015).



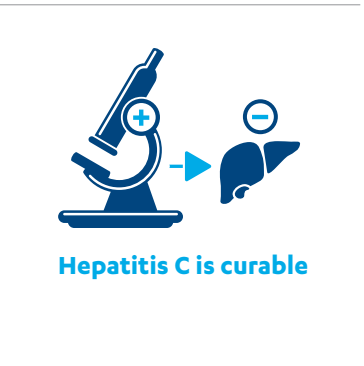
Reference:
Lichtenberg, F. R., Pharmaceutical innovation and longevity growth in 30 developing and high-income countries, 2000–2009. 2014. *Health Policy and Technology* 3, pp. 36–58.



Reference:
National Cancer Institute: http://seer.cancer.gov/csr/1975_2012/browse_csr.php



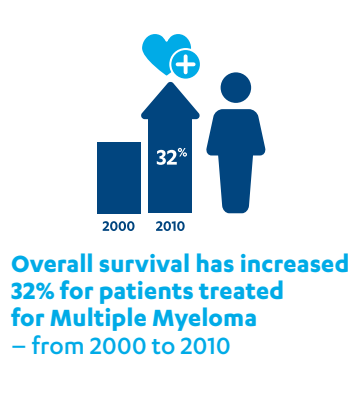
Reference:
Samji, H. et al., 2012. *PLOS ONE*, 8(12), p. e81355.



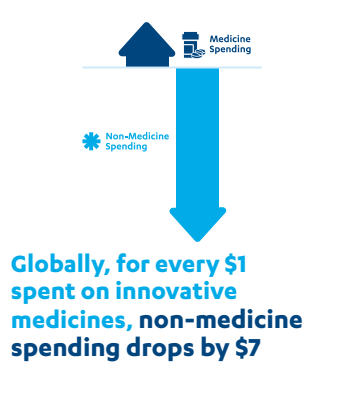
Reference:
Marinho, R. Hepatitis C, stigma and cure. *World Journal of Gastroenterology*. 6703-6703. <http://www.ncbi.nlm.nih.gov/pmc/articles/PMC3812468/4>. U.S. Food and Drug Administration, http://www.accessdata.fda.gov/drugsatfda_docs/label/2001/pegsche080701LB.htm



Reference:
Healthcare Quarterly, 14(1) January 2011: 82-87. doi:10.12927/hcq.2011.22077. Hospital Resource Use by Patients with Schizophrenia: Reduction after Conversion from Oral Treatment to Risperidone Long-Acting Injection, David Koczerzinski and Larry Arshoff.



Reference:
<http://www.myelomabeacon.com/news/2013/11/01/multiple-myeloma-survival-significantly-increases-last-decade/or...>
<http://www.myelomacanada.ca/docs/percent%20increase%20in%20survival%20110207.pdf>



Reference:
Lichtenberg FR. Benefits and costs of newer drugs: An Update. *National Bureau of Economic Research (NBER)*, Working Paper no. 8996, 2002.

- 1B** Janssen has committed \$1 billion in Life Sciences investments (since 2014)
- Provides medicines to patients for compassionate use**
- 45K** Helps 45,000 patients through the BioAdvance Patient Support Program
- 649** Has 649 clinical trial sites across Canada involving >11,000 patients